



**MERCU EMPAYAR SDN.  
BHD.**

**COMPANY PROFILE**

# COMPANY DETAILS

- ❑ COMPANY NAME : **MERCU EMPAYAR SDN BHD**
- ❑ COMPANY REG. NO : 1367519-A
- ❑ COMPANY ADDRESS : NO. 75-1, JALAN 21/10, USJ 21, 47630 SUBANG JAYA, SELANGOR. MALAYSIA.
- ❑ PAID UP CAPITAL : RM100,001.00
- ❑ YEAR INCORPORATE : 13 MAY, 2020
- ❑ EMAIL ADDRESS : [info@mercuempayar.com](mailto:info@mercuempayar.com)

## BANK DETAILS

### **CIMB**

- BENEFICIARY BANK : **CIMB ISLAMIC BANK BERHAD**
- BANK ACC NO – **RM** : 8604148225
- BANK ACC NO – **RM** : 8011327522
- BANK ACC NO – **USD** : 890000798840
- SWIFT CODE : CTBBMYKL
- BANK ADDRESS : 49, JALAN PINANG B 18/B, SEKSYEN 18, 40000 SHAH ALAM, SELANGOR. MALAYSIA.

### **AGROBANK**

- BENEFICIARY BANK : **AGROBANK BERHAD**
- BANK ACC NO : 1-00-7201-00008708-7
- SWIFT CODE : AGOBYMYKL
- BANK ADDRESS : F-GF-25,26 &27, VISTA ALAM, NO.3 PRESINT 4.5, JALAN IKHTISAS 14/1, SEKSYEN 14, 40000 SHAH ALAM, SELANGOR. MALAYSIA.

# Introduction

**MERCU EMPAYAR SDN. BHD. (“MESB”)** was established on **13 of May 2020** during the uproar of the killing virus in the country: *Novel Coronavirus-19*. For that moment, whole nationwide is under lockdown and quarantined to curb the viruses from spreading. Movement Control Order (MCO) which was announced by the government (about 12 months) have hit badly the small and the giant industries in Malaysia. For a business which is not categories as a “recession proof” have been collapsed and turn into bankruptcy.

Therefore, the “PROBLEM” become and “OPPORTUNITY” where people realized that food-chain and agricultural sector among the industries which categorized as a “recession proof” and become an “essential” to the country.

MESB has looking at Chicken business as one of the food chain which cannot be break even if the market shut-down for another 10 years more. Furthermore, the quarantine centre become massive with the numbers of patients and chicken is needed over there. MESB has combined with the experts and start to supply chicken into retail and whole seller market with the affordable price.

Along the way, MESB has also supplies other items into the hypermarket (Peninsular Malaysia and Borneo). We manage to collaborate with many brands and able to lock as distributor for certain brands. Few of them are:

1. Chicken - Local, Thailand
2. Indian Meat – Black Gold, Al Quresh, Allana, Amber
3. Australian Lamb – Ararat & Swift
4. Palm Oil - Packaging
5. Sugar - Prai

MESB also runs a chicken contract farming business at Johor which have around 55,500 birds per cycle. Our areas are Segamat & Pontian.

MESB eventually looking for the opportunity to collaborate with other industries out there to keep on supply the essential product into the market. We hold more than 100s Hypermarket & retail for individual items above. We also collaborate with the company to supply raw material into Government Sector like an Army.

Thank you,

# Vision & Mission

## MISSION

- Become one of the outstanding company to import raw material product (poultry & meat) to supply into Malaysia market.
- To tap into massive supply (poultry & meat) business in Penisular, Sabah & Sarawak.
- To collaborate with government/state/private agency to secure funding.
- To take-over any poultry centre to start with our own products.
- To collaborate with local farm to secure the live bird, cattle & goat/mutton and supply to local market.
- To engage the professional/skill worker to create a new products (sausage, nuggets, fries, patty burgers, satay, etc)
- To supply additional commodity to east and west Malaysia and neighbouring country

## VISION

- To become the market leader in 25-years time for supplying raw material (poultry & meat).
- To become one of the well-known company whom supply commodity nationwide and neighbouring ASEAN country.
- To own individual halal hub (farming & slaughtering) to supply whole region.
- To have own home brand processing products and supplying in Asean country.

# Company Inception



SURUHANJAYA SYARIKAT MALAYSIA  
COMPANIES COMMISSION OF MALAYSIA  
(Agensi di bawah KPDNHEP)



**COMPANIES ACT 2016 (SECTION 17)**  
**(ACT 777)**

## **CERTIFICATE OF INCORPORATION OF PRIVATE COMPANY**

This is to certify that

**MERCU EMPAYAR SDN. BHD.**  
**202001011199 (1367519-A)**

is, on and from the 13<sup>th</sup> day of May 2020, incorporated under the Companies Act 2016, and that the company is a company limited by shares and that the company is a private company.

Dated at **KUALA LUMPUR** this 13<sup>th</sup> day of May 2020.

A handwritten signature in black ink, appearing to read 'Nor Azimah', positioned above the official name of the Registrar.

**NOR AZIMAH BINTI ABDUL AZIZ**  
**REGISTRAR OF COMPANIES**  
**MALAYSIA**

# Board Director



## MAS HAMDY RAZALAN

### MANAGING DIRECTOR

GRADUATED from University Malaysia of Sabah, he hold a Degree in BSc (Hons) Geology on 2003. He started his career as an Assistant Supervisor at supermarket chain-store in Singapore - MCP Supermarket Pte. Ltd. Served the company for one (1) year and returned to Malaysia to pursue his dream to become a Geologist in Oil & Gas industries.

Has gone to many interviews and was rejected by the oil & gas industries, he then starting his professional career at Tesco Stores Malaysia Sdn. Bhd. ("Tesco") in 2005 as a Cashiering Manager, then become a Leasing Manager to handle all the retail outlet in Tesco Malaysia for almost 7-years. He opened up 35 Tesco during his stint as a Leasing Manager. Re-commercialize/rejuvenate the under performing malls is one of his expertise.

In 2011, he joined Putrajaya Holdings Sdn. Bhd. ("PJH") as a Senior Leasing Exec. He wanted to explore the leasing office experience and guidelines. He master into an office leasing to bundle with retail leasing and become a great combination for his career path. After 3-years with PJH, he joined Malaysian Resources Corporation Berhad ("MRCB") at 2014. Become a Senior Leasing Manager, he manage a bigger shopping mall called **NU Sentral Shopping Mall**, with 247 tenants. In NU Sentral, he build connection with the high profile tenants.

After 2-years with MRCB, he joint JAKEL Properties Sdn. Bhd. as a General Manager. Managing the shopping mall at Jalan Tar, Kuala Lumpur, he expand his career into managing few divisions - Leasing, Tenancies, Fit-out, Operations, Marketing, Credit Control, Maintenance, Housekeeping, and reporting.

With a substantial experience in shopping line, he resign from his post as a GM and started to run the business of his own. His experience has given him the idea to

venture into a food business. He is currently hold the advisor for MHS Sizzling Resources, a F&B company which runs a food business under brand “Yob & Yong’s” since 2017.

The brand has become a winner for the **Asia Pacific Best Brand Laureatte (Bumiputra)** for an **Asian Fussion Category in 2018**. The brand has run for 8 outlets nationwide but collapse due to pandamic and left 1 outlet now at Semarak.

He was an ex-CEO for Albari Solutions Sdn. Bhd., a mining sand’s company operating in 2017 centered in Semenyih, Selangor. The concession can discharge around 10,000 metric tonne per month during his glorious day. After operational for 3-years, the business was close down due to pandemic. Government has close the construction sector for about 1 year through MCO.

He was then appointed as the President of National Entrepreneur Development Chamber (DPUN) at June 2020 for developing business and support. He also has been appointed as the Vice President for YAUM Foundation which runs for helping and developing the poor peoples.

In June 2020, he manage Mercu Empayar Sdn. Bhd. (“MESB”), as the Managing Director to runs all the trading business in Malaysia and overseas. MESB is currently hold few brand for the exporting needs into Sabah and Peninsular.

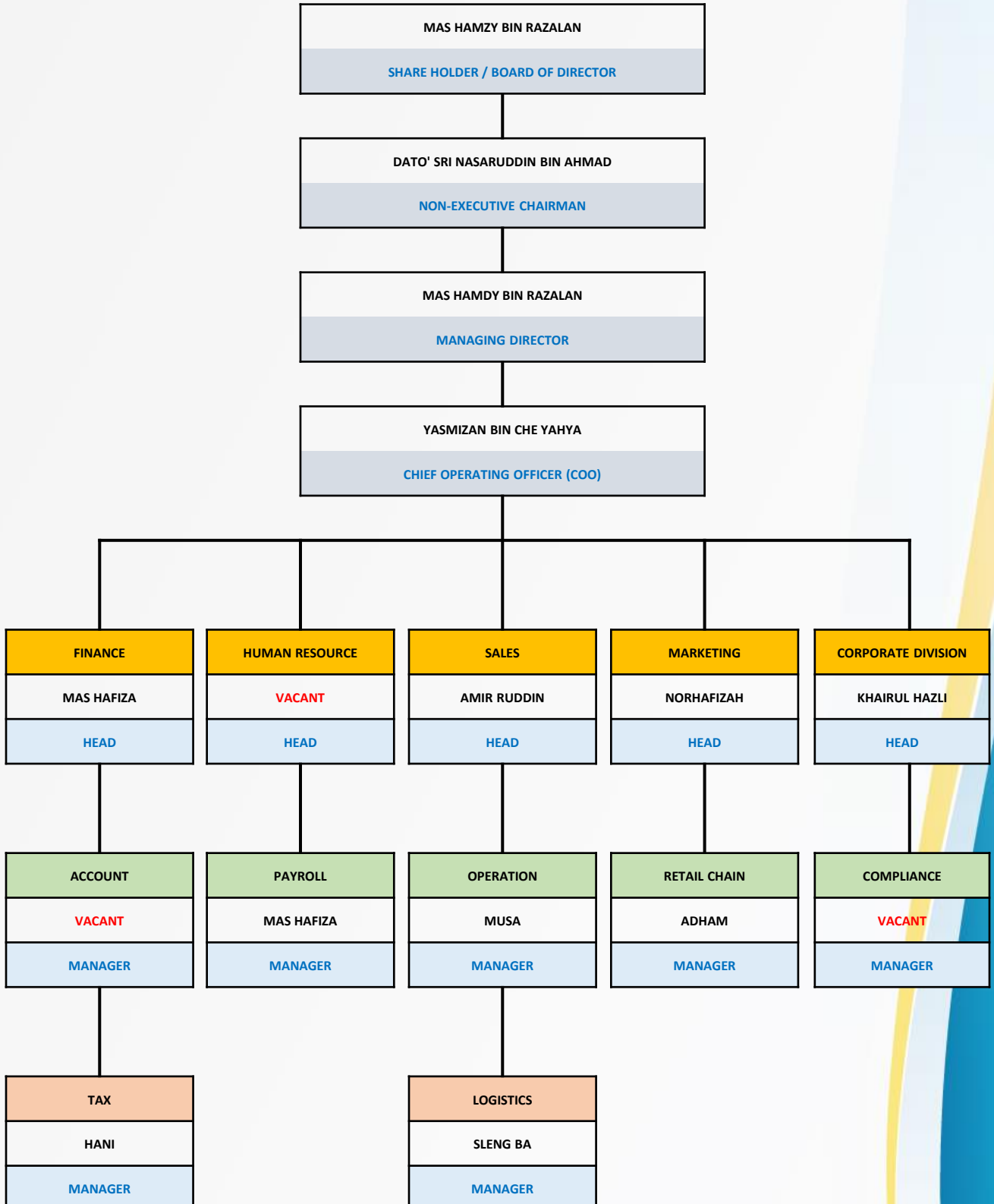
In August 2022, he become a Head of Investment & Procurement for Zubir Food (Sabah) Sdn. Bhd. Currently he holds the responsibilities to manage the buying section to source out raw materials from local and overseas into Sabah market.

To date, under his steer, MESB has brought over 300 containers frozen chicken part to East and West Malaysia. The numbers keep growing due to the trust he has put into the buyer’s wits.

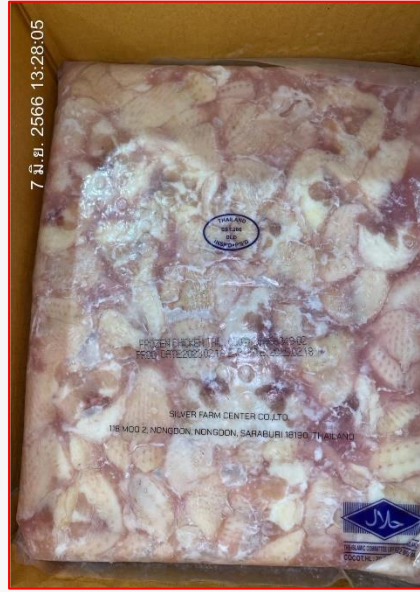
And now, MESB will grow into the other sectors besides frozen chicken.

# Organisation Chart

## CARTA ORGANISASI MERCU EMPAYAR SDN. BHD.



# FROZEN CHICKEN (PANUS / SILVER FARM)



**SILVER FARM, PANUS** among Thailand's frozen chicken company which already have strong market in Southeast Asia and others countries respectively. The above factories have obtained the Ministry's approval which allow them to export their products to Malaysia. We dealt directly with the above factories.

Our company have an Import Permit from the Ministry of Agriculture and Food Strategy (MAFS). We already imported and sent it to Peninsular & Sabah for about 250 over containers in a year.

We also supplying our frozen chicken to the Air Asia and Malaysia Airline vendor for the ready-to-eat meal in their airlines. We also supplier to Mydin stores Sandakan and CKS Hypermart, Sabah.

The above factories have the capacity to supply frozen chicken following our demands. Their product supply encompass all chicken part and whole chicken.

MESB also collaborate with local brand like Ayamas & PTS for the frozen chicken supply in East & West Malaysia.

# PANUS – Letter Of Authorise

บริษัท พันธุ์ปoultry กรุ๊ป จำกัด



PANUS POULTRY GROUP CO.,LTD.

Date: 6 AUGUST 2024

**MERCU EMPAYAR SDN. BHD.**

1<sup>st</sup> Floor, 75-1, Jalan USJ 21/10,  
USJ 21,  
47630 Subang Jaya,  
Selangor Darul Ehsan,  
MALAYSIA.

Dear Sir,

**CUSTOMER : MERCU EMPAYAR SDN. BHD. (1367519-A)**  
**REFERENCE : SUPPLYING HALAL IMPORTED CHICKEN MEAT PRODUCTS**  
**PRODUCT : FROZEN CHICKEN PART & MDM**

Reference is made on the above mentioned.

We would like to inform you that our company **PANUS POULTRY GROUP CO., LTD.** registered with **ESTABLISHMENT NO. 79** is one of the **Department of Veterinary Services Malaysia (DVSM)** approved slaughterhouse and supplier of **Thailand's Halal Imported Chicken** products to **MERCU EMPAYAR SDN. BHD.** in **SABAH** without any obligation.

We are interested to supply to the abovementioned company. As of today, we have a very good business relationship with them and are looking forward in supplying the full range of **Frozen Chicken Part and MDM** products from Thailand with all the concerned terms and conditions are fully imposed with the approval from the Malaysian Authority.

Best Regards, Thank you.

Yours faithfully,



บริษัท พันธุ์ปoultry กรุ๊ป จำกัด  
PANUS POULTRY GROUP CO.,LTD.

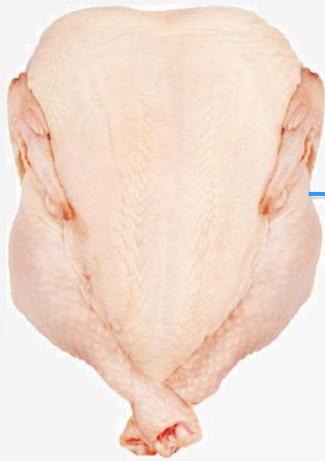
**KRISDA KASIVIVAT**  
**CHIEF OPERATING OFFICER (COO),**  
**PANUS POULTRY GROUP CO., LTD**

สำนักงานใหญ่ 59 หมู่ 5 ต.หนองปรือ อ.บางพลีใหญ่ จ.สมุทรปราการ 10540 โทร: 02-815-0003 โทรสาร: 02-815-6415 เว็บไซต์: www.panuspoultrygroup.co.th  
HEAD OFFICE 59 Village No.5 Moo 5 Ng. Prue Sub Dist., Bang Phli Sub Dist., Chon Buri Province 20191 THAILAND TEL: 02-815-0003 FAX: 02-815-6415 www.panuspoultrygroup.co.th

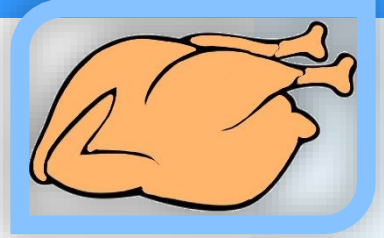
โรงงาน 41 หมู่ 5 ต.หนองปรือ อ.บางพลีใหญ่ จ.สมุทรปราการ 10540 โทร: 02-815-0003  
Factory 41 Village No.5 Moo 5 Ng. Prue Sub Dist., Bang Phli Sub Dist., Chon Buri Province 20191 THAILAND TEL: 02-815-0003 FAX: 02-815-6415

สาขาภาคเหนือ 129/187 หมู่ 17 ต.แม่สุพรรณ อ.แม่สอด จ.แม่ฮ่องสอน 10100  
Branch North 129/187 Moo 17 Maesueh Sub Dist., Mae Sot Dist., Mae Hong Son Province 10100 TEL: 053-719-3706 FAX: 053-719-3706

# Whole Chicken - Fresh/Frozen



**WHOLE CHICKEN**



## Whole Chicken (Standard)

Origin : Local / Thailand / Brazil  
Weight : 1.5Kg ~ 2.1Kg  
Part : Head, Gizzard, Heart, Feet

## Whole Chicken (Super)

Origin : Local / Thailand / Brazil  
Weight : 1.3Kg ~ 1.8Kg  
Part : **NO** Head, Gizzard, Heart, Feet

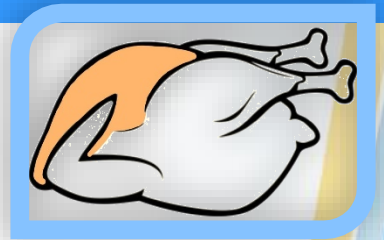
## Whole Chicken (Spring)

Origin : Local / Thailand / Brazil  
Weight : 800gm ~ 1.2Kg  
Part : **NO** Head, Gizzard, Heart, Feet

# Chicken Part - Breast



**BONELESS BREAST (BB)**



## BONELESS BREAST (**BB** or **SBB**)

Origin : Thailand / Brazil  
Weight : 2Kg x 6 Bag (1 Karton)  
Option : **WITH** Skin or **NO** Skin  
Cut : Normal Cut / Butterfly cut

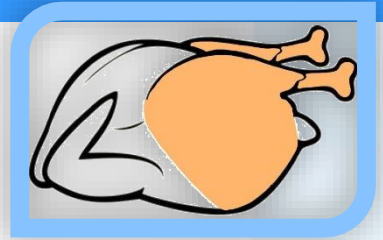
## HALF BREAST (**BONE**)

Origin : Local / Thailand / Brazil  
Weight :  $\pm$  (250gm - 320gm)  
Option : **WITH** Skin or **NO** Skin  
Cut : Bone



**HALF BREAST (BONE)**

# Chicken Part - Bone In Leg



## **BONE IN LEG (BIL)**

Origin : Local / Thailand / Brazil

Weight :  $\pm$  (250gm - 320gm)

Size : 6,7, 8, 9, 10, 11, 12

Cut : Machine Cutting (MC)



## **BONE IN LEG (BIL)**

Origin : Local / Thailand / Brazil

Weight :  $\pm$  (250gm - 320gm)

Size : 6, 7, 8, 9, 10, 11, 12

Cut : Japanese Cutting (JC)

## **BONE IN LEG (BIL)**

## **CHICKEN CHOP**

Origin : Local / Thailand / Brazil

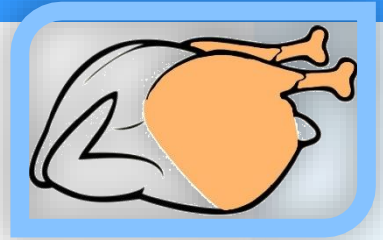
Weight :  $\pm$  2Kg x 6 pack (1 Karton)

Size : 8, 9, 10, 11, 12



## **CHICKEN CHOP**

# Chicken Part - Drumstick & Thigh



**DRUMSTICK**

## **DRUMSTICK**

Origin : Local / Thailand / Brazil

Weight :  $\pm$  (150gm - 170gm)



**CHICKEN THIGH**

## **CHICKEN THIGH**

Origin : Local / Thailand / Brazil

Weight :  $\pm$  (170gm - 200gm)

# Chicken Part - Wing & MJW



**CHICKEN WING**

## **CHICKEN WING (3-JOINT WING)**

Origin : Thailand / Brazil

Weight :  $\pm$  90gm ~ 130gm

Size : S, M, L



**MIDDLE JOINT WING**

## **MIDDLE JOINT WING (MJW)**

Origin : Thailand / Brazil

Weight :  $\pm$  (45gm)

# Chicken Part - Ofal & Others



**CHICKEN FEET**



**CHICKEN PAW**

**CHICKEN GIZZARD**



**CHICKEN HEART**

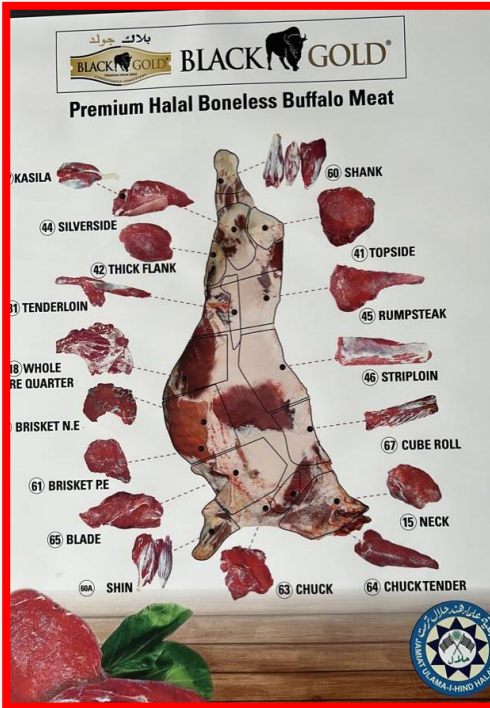


**BISHOP NOSE**



**CHICKEN SKIN**

# INDIAN BUFFALO MEAT (ALLANA / AL QURESH)



ALLANA/AL-QURESH/BLACK GOLD have marked their brand in Malaysia with a very good demand thus far. Their quality among the best with all Indian meat in Malaysia.

Malaysian imported around 170,000 Ton Metric meat of Indian meat in a year to cater the demand nationwide. We are in the midst of discussion to get Black Gold for our customers nationwide.

We have an Import Permit which permitted us to import meat all over the globe for any factory under the Ministry's approval.

# Australian Lamb & Mutton (ARARAT)



Australian is a well-known country to supply a quality beef, lamb & mutton in the world. Among all the suppliers in Australia, Ararat Meat Export Pty Ltd (EST 298) is one of the biggest company to supply meat in Malaysia and throughout the world.

Their soft textures of lamb & mutton makes them one of the leading choice for Malaysia's market. MESB has a collaboration with the company direct to Ararat Lamb & Mutton. We can meet the customers demand at a reasonable price.



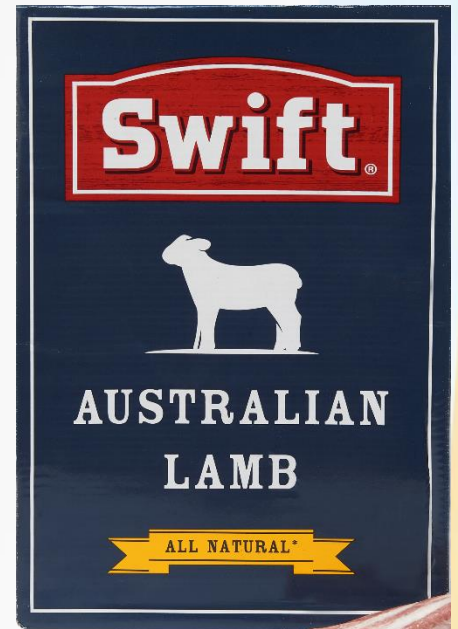
6-Way Cut

# Australian Lamb & Mutton (SWIFT)

Another Australian's well-known brand with a quality beef, lamb & mutton is SWIFT (EST 1614). JBS has bought over Swift in Australia and continue to pursue a very serious meat business around the globe. They are among the biggest company to supply meat in Malaysia and throughout the world.

Their very known lamb shoulder and lamb/mutton carcass has mark they brand in Malaysia. Their price also among the cheapest in the market and made them a popular choice for Malaysian's western market.

MESB has a collaboration with SWIFT brand and able to supply direct to West and East Malaysia.



# FROZEN SEAFOOD (FISH & SQUID)

**SABAH SEAFOOD** among the biggest contribution to the Sabah state economy. Sabah have few range of seafood chain. MESB through its counterpart has team up with the local company to produce our request.

We are exporting certain fish range to Indonesia too. At the same time we are buying their squid and crab to Malaysian market. We selling seafood to local market beyond the buyer reach.

We also keep stock for the day of where the low tide season and to help the local supply from shortfall.



# PALM OIL

## GOLDEN AGRO 19 BERHAD



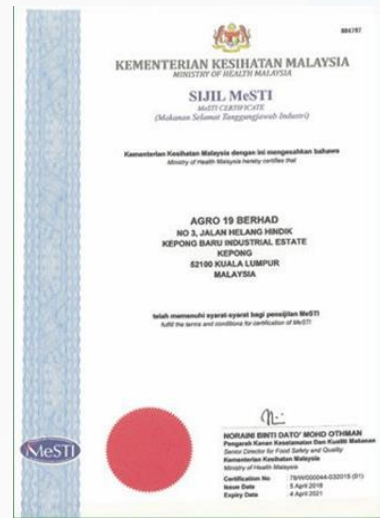
Established in 2007, Agro 19 Berhad has been in operations for 17 years. They are highly experienced in the business to supply refined palm oil, be it for consumer packaging and bulk. Today, the company provides premium packaged oils to 3 major segments of the market including Retail, Food Service and Export. Their products are sold through retailers, key distributors in Malaysia and we export to many parts of the world, including the Middle East, Africa and Australia.



MPOB



KPDNKK



MESTI



Jerry can



Flexi Bag



Pet Bottle



# FRESH VEGETABLES

MESB opened vegetables farm at Bertam, Penang under PERDA's lease agreement. The land approximately 5-acres plant with five (5) basic vegetables to supply at Mamak store around Penang area and wholesale market. We have a strongly demand from the mamak store due to our freshness.

MESB is in the midst of negotiating with Lotus to supply our crops into Lotus. When we successfully clinch the deal with Lotus, we plan to expand our vegetables range into few varieties. We plan to have a warehouse to stock all our vegetables and to have our own lorries for the delivery.

We have a few challenges with other competitors but we will ensure our quality meet the market demand in future. Five of our basics vegetables are;

1. Lady finger (*Bendi*)
2. Bitter gourd (*Peria Katak*)
3. Cucumber (*Timun*)
4. Long water gourd (*Labu air Panjang*)
5. Luffa Gourd (*Petola*)



# RICE

## (INDIA/VIETNAM/PAKISTAN)

**MESB** has collaborate with the rice miller in India, Vietnam & Pakistan and is able to supply a white rice and also a basmathi rice. MESB exported rice to Philippines & Indonesia.

With the different spec of rice individually, MESB have a few range of rice from various countries.

1. India – Long grain - IR-64
2. Vietnam – Long grain – (IR-504, IR-5451, DT8) and Broken rice
3. Pakistan – Long grain - IRRI-6

The miller have a capacity to supply in a big volume. MESB can guarantee the quality and delivery.

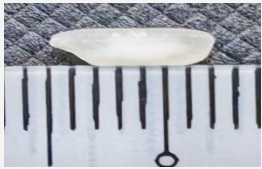
## INDIA RICE

### Long Grain White Rice, Indian Rice, IR-64:

- Type: Non-basmati, long grain, often parboiled.
- Color: Pale yellow or creamy white.
- Grain Length: Typically 5.8mm to 6.2mm.
- Processing: Commonly parboiled (soaked, steamed, and dried) to enhance nutrient content.
- Specific Quality Parameters:
  - Moisture Content: Maximum of 14%.
  - Broken Grains: Maximum of 5%.
  - Chalky Kernels: Maximum of 4%.
  - Foreign Matter: Generally negligible, often 0.5% maximum.
  - Damaged/Discolored Grains: Maximum of 2%.
  - Red and Red Streaked Kernels: Maximum of 1%.
- Cleaning: Often 100% Sortex cleaned for purity.
- Milling: Well milled, and can be freshly milled.
- Cultivation Type: Can be conventional, natural, or organic if required.
- Admixture: 0.2-0.6% max.
- Chalky Kernels: 1.5% max or nil, as agreed upon.
- Uric acid: 100mg per kg max.
- Other Notes: IR64 rice is known for its good cooking quality, often resulting in grains that double in size when cooked properly, according to Vishnu Rice Mill. It has a pleasant aroma. It's a popular choice for export, particularly to African and Gulf countries,



# VIETNAM RICE



## Long grain White rice Vietnam IR-504 Specifications

- Sheet: 5 (% max)
- Humidity: 14 (% max)
- Impurities: 0.5 (% max)
- Silver belly: 6.0 (% max).
- Average rice length: 6.2 mm
- Shape: Medium long, big
- Color: Evenly bright-white, transparent in the peak
- Taste: Fatty, light sweet
- Smell: Light when cooked.



## Long grain White Rice Vietnam OM 5451 Specifications

- Sheet. 5 (% max)
- Humidity. 14 (% max)
- Impurities. 0.1 (% max)
- Silver belly beads. 2 (% max)
- Average rice's length: 6.6 mm min
- Shape: Long and thin
- Color: Milky white
- Taste: Slightly milky
- Smell: Slightly fragrant.



## Long grain White Rice Vietnam OM 5451 Specifications

- Moisture: 14.5% max
- Foreign matter: 0.1% max
- Damaged kernels: 0.5% max
- Yellow kernels: 0.5% max
- Average rice's length: 6.8mm min
- Chalky kernels: 2.0% max.
- DT8 rice has a characteristic light aroma and a shiny, non-chalky, low amylose content of 16.29% (20%).
- When cooked for sticky, sweet, drained rice



## Broken Rice Specifications

- Broken Ratio: 100%. This means it consists entirely of fragmented rice grains.
- Moisture Content: Maximum 14% or 14.5%.
- Impurities/Admixture: Maximum 0.1% or 0.2%. This refers to the amount of foreign matter in the rice.
- Milling Degree: Well-milled and double polished, often sortexed for cleanliness.
- Shape: Can be short grain or long grain depending on the rice variety.
- Color: Typically white, with a natural color for white rice. Fragrant 100% broken rice is also available.
- Texture (Cooked): When cooked, it can be dry, swollen, spongy, or hard, depending on the variety and intended use (e.g., as an ingredient for noodles).
- Nutritional Value: Like other rice varieties, it is a good source of carbohydrates and low in fat.

# SUGAR (LOCAL/IMPORT)

MESB has collaborate with the sugar's whole seller in Malaysia to work hand-in-hand with MESB to supply to our client locally and overseas.

MESB has successfully supply sugar in the local market specifically in cordial factory. MESB has 1-major sugar brand locally called Prai Sugar under MSM. We are able to supply Prai Sugar, packing 1Kg into a local market with an attractive price.

Meanwhile, for import sugar, MESB work with Thai sugar called Mitr Phol & TRR. As of Indian sugar, MESB work closely with Renuka & Pari brands. We have the capacity to supply in big quantities.

## SUGAR LOCAL (PRAI SUGAR)

For half a century, **MSM's** flagship product, Gula Prai, has been the premium sugar brand in Malaysia and the most popular choice among consumers.

The 50 year-old iconic home-grown product, which carries an approximate brand value of RM615 million, is a testament that its brand values are being passed on from one generation of Malaysians to the next. Thus, Gula Prai certainly lives up to its slogan, "Sweetening Lives Since 1964."



### **PRAI SUGAR**

- Colour : White
- Origin : Malaysia
- Weight : 1Kg
- Packing : Bundle – 24Kg

# SUGAR IMPORT (MITR PHOL, THAILAND)

**MITR PHOL** offers a range of sugar products with varying specifications, including refined white sugar, caster sugar, brown sugar, and raw cane sugar, each with specific parameters for color (ICUMSA), polarization, moisture, ash content, and particle size.

## Key Specifications by Product Type:

- Refined White Sugar:
- ICUMSA 45 max
- Polarization 99.8% min
- Moisture 0.06% max
- Conductivity ash 0.015% max
- Shelf life 2 years.

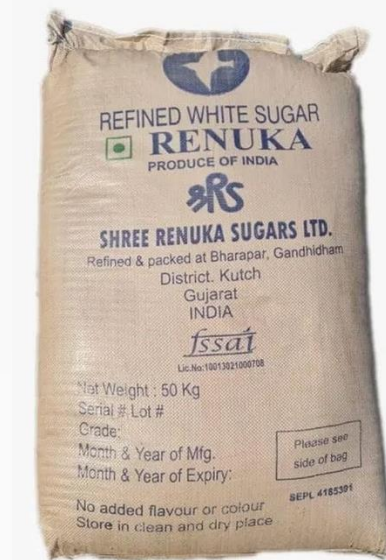


# SUGAR (IMPORT) RENUKA, INDIA

**SHREE RENUKA SUGARS** produces various types of sugar, including refined white sugar and raw sugar, with their refined white sugar conforming to ICUMSA 45 grade and having a fine crystal structure. The company emphasizes consistent quality, using advanced production technology and a Sulphur-free refining process. Their sugar is characterized by being sparkly white, moisture-free, and easy to dissolve.

## Key Specifications & Characteristics of Renuka Sugar:

- Type: Primarily refined white sugar (ICUMSA 45 grade) and raw sugar (Very High Polarized sugar).
- Appearance: Sparkly white crystals.
- Form: Crystal.
- Dissolvability: Easy to dissolve due to its fine crystal structure.
- Purity: Shree Renuka Sugars' refineries produce EC-II grade sugar conforming to European standards with negligible sulphur content.
- Packaging: Often available in 50 kg bags.
- Storage: Recommended to be stored in a cool and dry place.
- Applications: Versatile for various food and beverage applications.



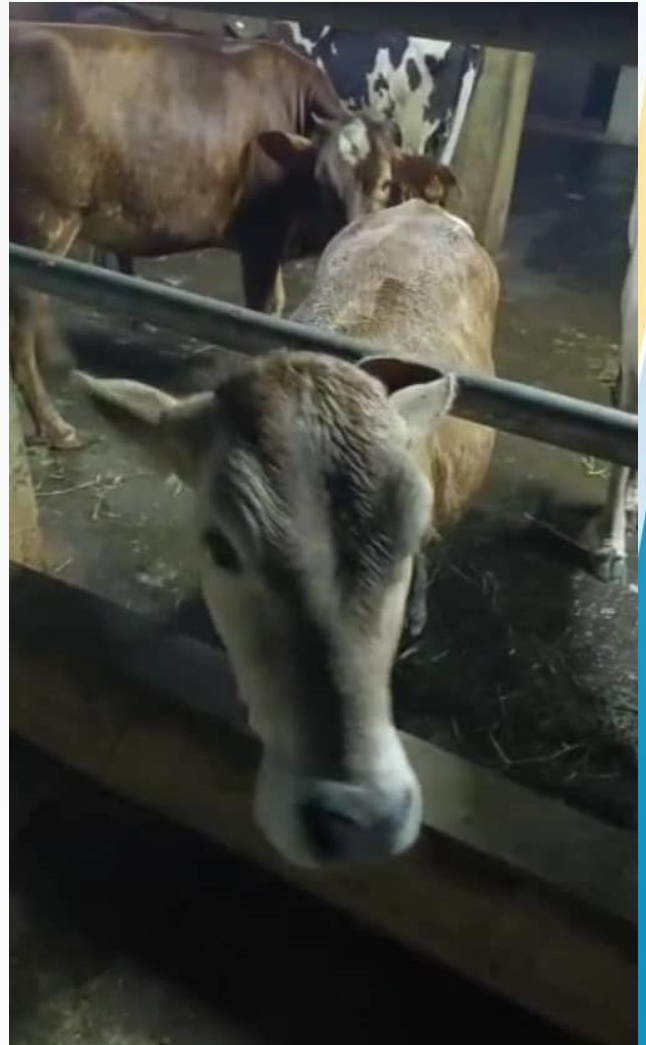
# LIVE STOCK (CATTLE)

MESB run a cattle/goat/mutton business in Bukit Mertajam, Penang. We have 2 separate farms housing cattle and another one for goat and mutton.

Our cattle range is Brahman & KK Cross. We actively supply to local customers in Penang for daily cut in a day. At the same time we also supply cattle to Penang n Johor during the Pilgrim Day and festivals.

Meanwhile for goat and mutton we supply around 70 to 100nos per month consistently to mamak stores in Penang. Further to that, we also do an event with a catering company and an Aqiqah which is common in Malay community known for their new born baby celebration.

Our goat range is Ferral, Jampari and Boer. Meanwhile for mutton is from Australia. We always keep stock on hand around 200-300 goat/mutton in certain events.



# LIVE STOCK (GOAT / MUTTON)



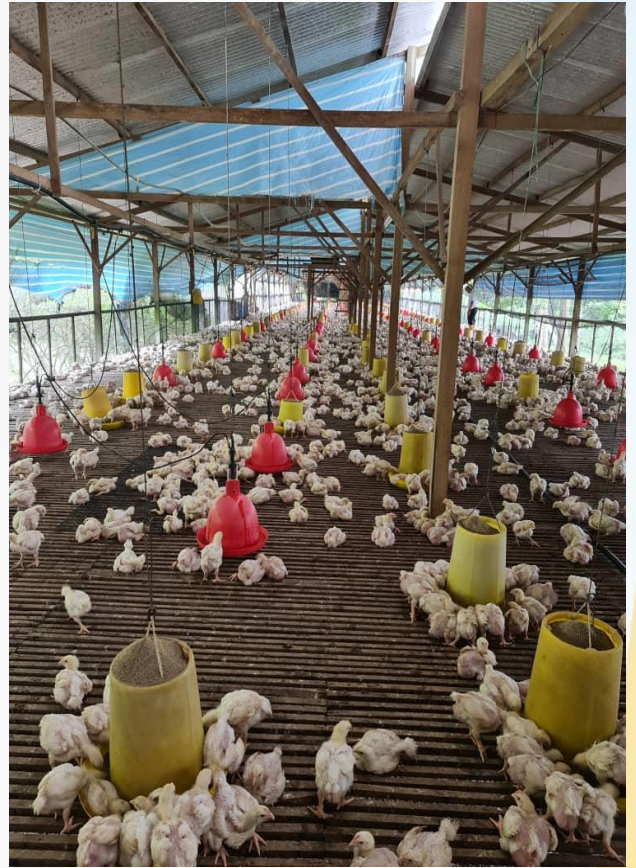
# LIVE STOCK (CHICKEN)

**CONTRACT FARMING** is another business of MESB. We run 2 farms which in Segamat (32,500 birds) and Pontian (23,000 birds). We have around 7 chicken coop which can fit in total of 55.5k birds per cycle.

MESB plans to extend another 50,000 birds additional by 1st Quarter 2024 which will mark our total contract farming to 100,000 birds per cycle.



# LIVE STOCK CHICKEN



# IMPORT PERMIT (CHICKEN PART)



**JABATAN PERKHIDMATAN VETERINAR**  
*Department Of Veterinary Services*  
Kementerian Pertanian dan Keterjaminan Makanan  
Wisma Tani, Blok Podium Lot 4G1 & 4G2  
No. 28 Persiaran Perdana, Presint 4  
62630 PUTRAJAYA  
MALAYSIA

Tel : 603-8873 2000  
Faks : 803-8883 6021  
E-mel : [pro@jdvs.gov.my](mailto:pro@jdvs.gov.my)  
Laman Web : [www.dvs.gov.my](http://www.dvs.gov.my)

**MERCU EMPAYAR SDN. BHD. (202001011199)**  
75-1, 1ST FLOOR  
JALAN USJ 21/10  
47630 SUBANG JAYA  
SELANGOR

(u.p.: MAS HAMDY BIN RAZALAN)  
No. Telefon : 0167242121  
E-Mel : [info@mercuempayar.com](mailto:info@mercuempayar.com)

Selamat sejahtera

YBhg. Datuk/ Dato'/Datin/ Dr./Ts./ Tuan/ Puan,

## PENDAFTARAN SEBAGAI PENGIMPOR KERATAN AYAM BAGI TAHUN 2025

Adalah saya merujuk kepada perkara di atas.

2. Sukacita dimaklumkan syarikat tuan telah didaftarkan sebagai pengimport Keratan Ayam bagi tahun 2025. Tiada sebarang caj/bayaran dikenakan untuk pendaftaran ini. Keterangan pendaftaran adalah seperti berikut:

No. Pendaftaran : PHAK/25/291 (DVS-KAY-P-2025/24-1838)  
Produk : Keratan Ayam  
Sumber : Negara dan loji yang diluluskan oleh DVS  
(Rujuk: <https://www.dvs.gov.my/index.php/pages/view/299>)  
Kuantiti : Terbuka – Berdasarkan kepada keperluan  
Tempoh : 3 Jun 2025 - 31 Disember 2025

3. Pihak tuan diwajibkan mendapatkan Permit Import sebelum dagangan berlepas dari negara pengeksport, kegagalan berbuat demikian akan mengakibatkan tindakan penguatkuasaan oleh pihak MAQIS di bawah Seksyen 11, Akta Perkhidmatan Kuarantin dan Pemeriksaan Malaysia 2011 (Akta 728).

4. DVS Malaysia berhak menyekat pengimportan dari negara dan loji yang telah diluluskan sekiranya berlaku kejadian penyakit di negara tersebut dan berlaku perubahan status loji setelah review audit dijalankan. Status kelulusan akan dikemaskini dari semasa ke semasa di laman web yang telah dinyatakan di atas.

5. Kelulusan ini tertakluk kepada perubahan dasar pengimportan yang ditetapkan oleh Kerajaan Malaysia dari semasa ke semasa.

Sekian, terima kasih.

Jabatan Perkhidmatan Veterinar

Cetakan komputer ini tidak memerlukan tandatangan

# IMPORT PERMIT (WHOLE CHICKEN)



## JABATAN PERKHIDMATAN VETERINAR

*Department Of Veterinary Services*

Kementerian Pertanian dan Keterjaminan Makanan

Wisma Tani, Blok Podium Lot 4G1 & 4G2

No. 28 Persiaran Perdana, Presint 4

62630 PUTRAJAYA

MALAYSIA

Tel : 603-8870 2000

Faks : 603-8888 6021

E-mel : [pro@dvs.gov.my](mailto:pro@dvs.gov.my)

Laman Web : [www.dvs.gov.my](http://www.dvs.gov.my)

**MERCU EMPAYAR SDN. BHD. (202001011199)**

75-1, 1ST FLOOR

JALAN USJ 21/10

47630 SUBANG JAYA

SELANGOR

(u.p.: MAS HAMDY BIN RAZALAN)

No. Telefon : 0167242121

E-Mel : [info@mercuempayar.com](mailto:info@mercuempayar.com)

Selamat sejahtera

YBhg. Datuk/ Dato'/Datin/ Dr./Ts./ Tuan/ Puan,

### PENDAFTARAN SEBAGAI PENGIMPOR AYAM BULAT BAGI TAHUN 2025

Adalah saya merujuk kepada perkara di atas.

2. Sukacita dimaklumkan syarikat tuan telah didaftarkan sebagai pengimport Ayam Bulat bagi tahun 2025. Tiada sebarang caj/bayaran dikenakan untuk pendaftaran ini. Keterangan pendaftaran adalah seperti berikut:

No. Pendaftaran : PHAB/25/166 (DVS-AYB-P-2025/24-1839)  
Produk : Ayam Bulat  
Sumber : Negara dan loji yang diluluskan oleh DVS  
(Rujuk: <https://www.dvs.gov.my/index.php/pages/view/299>)  
Kuantiti : Terbuka – Berdasarkan kepada keperluan  
Tempoh : 3 Jun 2025 - 31 Disember 2025

3. Pihak tuan diwajibkan mendapatkan Permit Import sebelum dagangan berlepas dari negara pengeksport, kegagalan berbuat demikian akan mengakibatkan tindakan penguatkuasaan oleh pihak MAQIS di bawah Seksyen 11, Akta Perkhidmatan Kuarantin dan Pemeriksaan Malaysia 2011 (Akta 728).

4. DVS Malaysia berhak menyekat pengimportan dari negara dan loji yang telah diluluskan sekiranya berlaku kejadian penyakit di negara tersebut dan berlaku perubahan status loji setelah review audit dijalankan. Status kelulusan akan dikemaskini dari semasa ke semasa di laman web yang telah dinyatakan di atas.

5. Kelulusan ini tertakluk kepada perubahan dasar pengimportan yang ditetapkan oleh Kerajaan Malaysia dari semasa ke semasa.

Sekian, terima kasih.

Jabatan Perkhidmatan Veterinar

Cetakan komputer ini tidak memerlukan tandatangan

# IMPORT PERMIT (MEAT & OFAL)



**JABATAN PERKHIDMATAN VETERINAR**  
*Department Of Veterinary Services*  
Kementerian Pertanian dan Keterjaminan Makanan  
Wisma Tani, Blok Podium Lot 4G1 & 4G2  
No. 28 Persiaran Perdana, Presint 4  
62630 PUTRAJAYA  
MALAYSIA

Tel : 603-8870 2000  
Faks : 603-8888 6021  
E-mel : [pro@dvs.gov.my](mailto:pro@dvs.gov.my)  
Laman Web : [www.dvs.gov.my](http://www.dvs.gov.my)

**MERCU EMPAYAR SDN. BHD. (202001011199)**

75-1, 1ST FLOOR  
JALAN USJ 21/10  
47630 SUBANG JAYA  
SELANGOR

(u.p.: MAS HAMDY BIN RAZALAN)  
No. Telefon : 0167242121  
E-Mel : [info@mercuempayar.com](mailto:info@mercuempayar.com)

Selamat sejahtera

YBhg. Datuk/ Dato'/Datin/ Dr./Ts./ Tuan/ Puan,

## PENDAFTARAN SEBAGAI PENGIMPORT DAGING & OFFAL BAGI TAHUN 2025

Adalah saya merujuk kepada perkara di atas.

2. Sukacita dimaklumkan syarikat tuan telah didaftarkan sebagai pengimport produk haiwan bagi tahun 2025. Tiada sebarang caj/bayaran dikenakan untuk pendaftaran ini. Keterangan pendaftaran adalah seperti berikut:

No. Pendaftaran : PH/25/316 (DVS-DOF-P-2025/25-0552)  
Produk : Daging & Offal Lembu, Kerbau, Kambing dan Bebiri  
Sumber : Negara dan loji yang diluluskan oleh DVS  
(Rujuk: <https://www.dvs.gov.my/index.php/pages/view/299>)  
Kuantiti : Terbuka – Berdasarkan kepada keperluan  
Tempoh : 3 Jun 2025 - 31 Disember 2025

3. Pihak tuan diwajibkan mendapatkan **Permit Import** sebelum dagangan berlepas dari negara pengeksport, kegagalan berbuat demikian akan mengakibatkan tindakan **penguatkuasaan** oleh pihak MAQIS di bawah Seksyen 11, Akta Perkhidmatan Kuarantin dan Pemeriksaan Malaysia 2011 (Akta 728).

4. DVS Malaysia berhak menyekat pengimportan dari negara dan loji yang telah diluluskan sekiranya berlaku **kejadian penyakit** di negara tersebut dan berlaku perubahan status loji setelah review audit dijalankan. Status kelulusan akan dikemaskini dari semasa ke semasa di laman web yang telah dinyatakan di atas.

5. Kelulusan ini tertakluk kepada **perubahan dasar pengimportan** yang ditetapkan oleh Kerajaan Malaysia dari semasa ke semasa.

Sekian, terima kasih.

Jabatan Perkhidmatan Veterinar

Cetakan komputer ini tidak memerlukan tandatangan

# MAQIS APPROVAL

ASAL ORIGIN: MALAYSIA

No. Permit / Permit No.: MAQI61Y02039762023  
MAQ/P22/DWS/12023003865

JABATAN PERKHIDMATAN KUARANTIN DAN PEMERIKSAAN MALAYSIA  
Department of Malaysian Quarantine and Inspection Services  
AKTA PERKHIDMATAN KUARANTIN DAN PEMERIKSAAN MALAYSIA 2011 (AKTA 728)  
MALAYSIAN QUARANTINE AND INSPECTION SERVICES ACT 2011 (ACT 728)

PERMIT IMPORT  
IMPORT PERMIT

1. Konsail / Pengimport (Nama dan Alamat)  
Consignee / Importer (Name and Address)  
MERCU ENDAYAR SEM. BMD,  
NO. 18, JALAN SARIT 25/55  
TAMAR SRI MEDIA  
40400 SERAI ALAM  
SELANGOR MALAYSIA

2. Konsailor / Pengeksport (Nama dan Alamat)  
Consignor / Exporter (Name and Address)  
TM FORWARDING SERVICES  
10/39, MOO 2, SOI BUNGKAB 1,  
T. SANANAKAM A., SADOA, SONGKHA THAILAND

3. Nama Dan Alamat Agen Yang Diberitahu (bagi pihak pengimport)  
Name and Address of Authorized Agent (for importer)  
EXCEL NORTHERN FREIGHT FORWARDING  
NO. 1,  
KOMPLEKS IKTIM,  
PADANG BESAR,  
02100 PADANG BESAR,  
PERLIS, MALAYSIA

4. Perihal / Description

Baris No.	Produk / Jenis Product / Animal Type	Perihal Tarif Tariff Description	Harga Unit Unit Price	Kuantiti (pokok) Quantity (pcs/kg)	Nilai (RM) Value (MYR)
1.	Chicken Chicken, Chicken Leg Bone In Frozen	0207149300	9.10	26,000,000	236,600.00
Jumlah / Total				26,000,000	236,600.00

5. Sumber/Kategori / Source/Category \*  
Animal Product

6. Jenis Komoditi / Type of Commodity  
Poultry Product

7. Tujuan Urunnaga / Purpose of Transaction\*\*  
HUMAN CONSUMPTION

8. Negara Asal / Country of Origin  
THAILAND

9. No. Sijil / Certificate No.:  
CITES No.  
Establishment No: 266-SILVER FARM CENTRE  
Hala Certification Body Name:  
The Central Islamic Committee Of Thailand (CICOT)

10. Syarat Import seperti di bawah atau di lampirkan  
Import Condition as per below or attached  
IH-000TA

12. Sah sehingga / Valid until  
14/03/2023

13. Pinta Masuk / Entry Point  
Padang Besar, Perlis

14. Tarikh Import /  
Date of import  
27/02/2023

15. No. Pengangkutan /  
Conveyance No.

Tempat: PUTRAJAYA  
Place: JABATAN PERKHIDMATAN KUARANTIN DAN PEMERIKSAAN MALAYSIA  
Date: 22/02/2023  
(NUR EMER ATRAWI STE ISHAK)  
JABATAN PERKHIDMATAN KUARANTIN DAN PEMERIKSAAN MALAYSIA  
By DIRECTOR GENERAL  
DEPARTMENT OF MALAYSIAN QUARANTINE AND INSPECTION SERVICES

\*Expired permit cannot be extended or replaced. A new permit application and fee is under responsibility of the applicant.  
\*\*Used or (and) cancellation of approved permits by the applicants is non-refundable and fee is under the responsibility of the applicant.  
Remark: This is computer generated and no signature required

Permit Charges: RM5,200.00

Page 1 of 1  
20-03-2023 3:33 PM  
JPV1610223003865

Bone In-Leg (BIL)

ASAL ORIGIN: MALAYSIA

No. Permit / Permit No.: MAQI61Y02039762023  
MAQ/P22/DWS/12023003835

JABATAN PERKHIDMATAN KUARANTIN DAN PEMERIKSAAN MALAYSIA  
Department of Malaysian Quarantine and Inspection Services  
AKTA PERKHIDMATAN KUARANTIN DAN PEMERIKSAAN MALAYSIA 2011 (AKTA 728)  
MALAYSIAN QUARANTINE AND INSPECTION SERVICES ACT 2011 (ACT 728)

PERMIT IMPORT  
IMPORT PERMIT

1. Konsail / Pengimport (Nama dan Alamat)  
Consignee / Importer (Name and Address)  
MERCU ENDAYAR SEM. BMD,  
NO. 18, JALAN SARIT 25/55  
TAMAR SRI MEDIA  
40400 SERAI ALAM  
SELANGOR MALAYSIA

2. Konsailor / Pengeksport (Nama dan Alamat)  
Consignor / Exporter (Name and Address)  
TM FORWARDING SERVICES  
10/39, MOO 2, SOI BUNGKAB 1,  
T. SANANAKAM A., SADOA, SONGKHA THAILAND

3. Nama Dan Alamat Agen Yang Diberitahu (bagi pihak pengimport)  
Name and Address of Authorized Agent (for importer)  
EXCEL NORTHERN FREIGHT FORWARDING  
NO. 1,  
KOMPLEKS IKTIM,  
PADANG BESAR,  
02100 PADANG BESAR,  
PERLIS, MALAYSIA

4. Perihal / Description

Baris No.	Produk / Jenis Product / Animal Type	Perihal Tarif Tariff Description	Harga Unit Unit Price	Kuantiti (pokok) Quantity (pcs/kg)	Nilai (RM) Value (MYR)
1.	Chicken Chicken, Chicken Wing Frozen	0207141000	12.90	28,000,000	361,200.00
Jumlah / Total				28,000,000	361,200.00

5. Sumber/Kategori / Source/Category \*  
Animal Product

6. Jenis Komoditi / Type of Commodity  
Poultry Product

7. Tujuan Urunnaga / Purpose of Transaction\*\*  
HUMAN CONSUMPTION

8. Negara Asal / Country of Origin  
THAILAND

9. No. Sijil / Certificate No.:  
CITES No.  
Establishment No: 266-SILVER FARM CENTRE  
Hala Certification Body Name:  
The Central Islamic Committee Of Thailand (CICOT)

10. Syarat Import seperti di bawah atau di lampirkan  
Import Condition as per below or attached  
IH-000TA

12. Sah sehingga / Valid until  
19/04/2023

13. Pinta Masuk / Entry Point  
Padang Besar, Perlis

14. Tarikh Import /  
Date of import  
18/03/2023

15. No. Pengangkutan /  
Conveyance No.

Tempat: PUTRAJAYA  
Place: JABATAN PERKHIDMATAN KUARANTIN DAN PEMERIKSAAN MALAYSIA  
Date: 20/03/2023  
(MUHAMMAD HAFIZ NABIL BIN MOHTARUD-DIN)  
JABATAN PERKHIDMATAN KUARANTIN DAN PEMERIKSAAN MALAYSIA  
By DIRECTOR GENERAL  
DEPARTMENT OF MALAYSIAN QUARANTINE AND INSPECTION SERVICES

\*Expired permit cannot be extended or replaced. A new permit application and fee is under responsibility of the applicant.  
\*\*Used or (and) cancellation of approved permits by the applicants is non-refundable and fee is under the responsibility of the applicant.  
Remark: This is computer generated and no signature required

Permit Charges: RM5,500.00

Page 1 of 1  
20-03-2023 1:16 AM  
JPV1610223003835

Chicken Wing

ASAL ORIGIN: MALAYSIA

No. Permit / Permit No.: MAQI61Y01056252023  
MAQ/P22/DWS/12023000894

JABATAN PERKHIDMATAN KUARANTIN DAN PEMERIKSAAN MALAYSIA  
Department of Malaysian Quarantine and Inspection Services  
AKTA PERKHIDMATAN KUARANTIN DAN PEMERIKSAAN MALAYSIA 2011 (AKTA 728)  
MALAYSIAN QUARANTINE AND INSPECTION SERVICES ACT 2011 (ACT 728)

PERMIT IMPORT  
IMPORT PERMIT

1. Konsail / Pengimport (Nama dan Alamat)  
Consignee / Importer (Name and Address)  
MERCU ENDAYAR SEM. BMD,  
NO. 18, JALAN SARIT 25/55  
TAMAR SRI MEDIA  
40400 SERAI ALAM  
SELANGOR MALAYSIA

2. Konsailor / Pengeksport (Nama dan Alamat)  
Consignor / Exporter (Name and Address)  
TM FORWARDING SERVICES  
10/39, MOO 2, SOI BUNGKAB 1,  
T. SANANAKAM A., SADOA, SONGKHA THAILAND

3. Nama Dan Alamat Agen Yang Diberitahu (bagi pihak pengimport)  
Name and Address of Authorized Agent (for importer)  
EXCEL NORTHERN FREIGHT FORWARDING  
NO. 1,  
KOMPLEKS IKTIM,  
PADANG BESAR,  
02100 PADANG BESAR,  
PERLIS, MALAYSIA

4. Perihal / Description

Baris No.	Produk / Jenis Product / Animal Type	Perihal Tarif Tariff Description	Harga Unit Unit Price	Kuantiti (pokok) Quantity (pcs/kg)	Nilai (RM) Value (MYR)
1.	Chicken Chicken, Chicken Mechanically Deboned Meat Frozen	0207149100	5.20	26,000,000	135,200.00
Jumlah / Total				26,000,000	135,200.00

5. Sumber/Kategori / Source/Category \*  
Animal Product

6. Jenis Komoditi / Type of Commodity  
Poultry Product

7. Tujuan Urunnaga / Purpose of Transaction\*\*  
HUMAN CONSUMPTION

8. Negara Asal / Country of Origin  
THAILAND

9. No. Sijil / Certificate No.:  
CITES No.  
Establishment No: 119-TRAI FOODS GROUP PUBLIC CO. LTD  
Hala Certification Body Name:  
The Central Islamic Committee Of Thailand (CICOT)

10. Syarat Import seperti di bawah atau di lampirkan  
Import Condition as per below or attached  
IH-000TA

12. Sah sehingga / Valid until  
12/02/2023

13. Pinta Masuk / Entry Point  
Padang Besar, Perlis

14. Tarikh Import /  
Date of import  
18/01/2023

15. No. Pengangkutan /  
Conveyance No.

Tempat: PUTRAJAYA  
Place: JABATAN PERKHIDMATAN KUARANTIN DAN PEMERIKSAAN MALAYSIA  
Date: 13/01/2023  
(MUHAMMAD HAFIZ NABIL BIN MOHTARUD-DIN)  
JABATAN PERKHIDMATAN KUARANTIN DAN PEMERIKSAAN MALAYSIA  
By DIRECTOR GENERAL  
DEPARTMENT OF MALAYSIAN QUARANTINE AND INSPECTION SERVICES

\*Expired permit cannot be extended or replaced. A new permit application and fee is under responsibility of the applicant.  
\*\*Used or (and) cancellation of approved permits by the applicants is non-refundable and fee is under the responsibility of the applicant.  
Remark: This is computer generated and no signature required

Permit Charges: RM5,200.00

Page 1 of 1  
20-03-2023 10:56 PM  
JPV1610223000894

MDM

ASAL ORIGIN: MALAYSIA

No. Permit / Permit No.: MAQI61Y01056252023  
MAQ/P22/DWS/12023003873

JABATAN PERKHIDMATAN KUARANTIN DAN PEMERIKSAAN MALAYSIA  
Department of Malaysian Quarantine and Inspection Services  
AKTA PERKHIDMATAN KUARANTIN DAN PEMERIKSAAN MALAYSIA 2011 (AKTA 728)  
MALAYSIAN QUARANTINE AND INSPECTION SERVICES ACT 2011 (ACT 728)

PERMIT IMPORT  
IMPORT PERMIT

1. Konsail / Pengimport (Nama dan Alamat)  
Consignee / Importer (Name and Address)  
MERCU ENDAYAR SEM. BMD,  
NO. 18, JALAN SARIT 25/55  
TAMAR SRI MEDIA  
40400 SERAI ALAM  
SELANGOR MALAYSIA

2. Konsailor / Pengeksport (Nama dan Alamat)  
Consignor / Exporter (Name and Address)  
TM FORWARDING SERVICES  
10/39, MOO 2, SOI BUNGKAB 1,  
T. SANANAKAM A., SADOA, SONGKHA THAILAND

3. Nama Dan Alamat Agen Yang Diberitahu (bagi pihak pengimport)  
Name and Address of Authorized Agent (for importer)  
EXCEL NORTHERN FREIGHT FORWARDING  
NO. 1,  
KOMPLEKS IKTIM,  
PADANG BESAR,  
02100 PADANG BESAR,  
PERLIS, MALAYSIA

4. Perihal / Description

Baris No.	Produk / Jenis Product / Animal Type	Perihal Tarif Tariff Description	Harga Unit Unit Price	Kuantiti (pokok) Quantity (pcs/kg)	Nilai (RM) Value (MYR)
1.	Chicken Chicken, Chicken Whole Carcasses and Half-Carcasses Frozen	0201100000	9.50	26,000,000	247,000.00
Jumlah / Total				26,000,000	247,000.00

5. Sumber/Kategori / Source/Category \*  
Animal Product

6. Jenis Komoditi / Type of Commodity  
Poultry Product

7. Tujuan Urunnaga / Purpose of Transaction\*\*  
HUMAN CONSUMPTION

8. Negara Asal / Country of Origin  
THAILAND

9. No. Sijil / Certificate No.:  
CITES No.  
Establishment No: 119-TRAI FOODS GROUP PUBLIC CO. LTD  
Hala Certification Body Name:  
The Central Islamic Committee Of Thailand (CICOT)

10. Syarat Import seperti di bawah atau di lampirkan  
Import Condition as per below or attached  
IH-000TA

12. Sah sehingga / Valid until  
24/03/2023

13. Pinta Masuk / Entry Point  
Padang Besar, Perlis

14. Tarikh Import /  
Date of import  
12/02/2023

15. No. Pengangkutan /  
Conveyance No.

Tempat: PUTRAJAYA  
Place: JABATAN PERKHIDMATAN KUARANTIN DAN PEMERIKSAAN MALAYSIA  
Date: 22/02/2023  
(MUHAMMAD HAFIZ NABIL BIN MOHTARUD-DIN)  
JABATAN PERKHIDMATAN KUARANTIN DAN PEMERIKSAAN MALAYSIA  
By DIRECTOR GENERAL  
DEPARTMENT OF MALAYSIAN QUARANTINE AND INSPECTION SERVICES

\*Expired permit cannot be extended or replaced. A new permit application and fee is under responsibility of the applicant.  
\*\*Used or (and) cancellation of approved permits by the applicants is non-refundable and fee is under the responsibility of the applicant.  
Remark: This is computer generated and no signature required

Permit Charges: RM30.00

Page 1 of 1  
20-03-2023 1:38 PM  
JPV1610223003873

NY Chicken

# OUR CLIENTS

The background features a vertical blue gradient that transitions from a deep, dark blue at the top to a bright, light blue at the bottom. In the lower half of the image, there are several overlapping, wavy, ribbon-like shapes. The most prominent is a thick yellow wave that curves across the width of the page. Below it are thinner, lighter blue waves, and at the very bottom, a white wave. The overall aesthetic is clean, modern, and professional.

# SILVER FARM - BIL TO SABAH



# SILVER FARM - CHICKEN TAIL TO SABAH



# SILVER FARM - WHOLE CHICKEN TO SABAH



# PANUS - CHICKEN WING TO SABAH



# SYED BISTRO - TANDOORI & CHICKEN PART



**Tandoori skinless  
- Spring Chicken**



**Whole Chicken  
- Cutting 14pcs**



# AIR ASIA VENDOR - OYSTER CHICKEN (TYSON)

